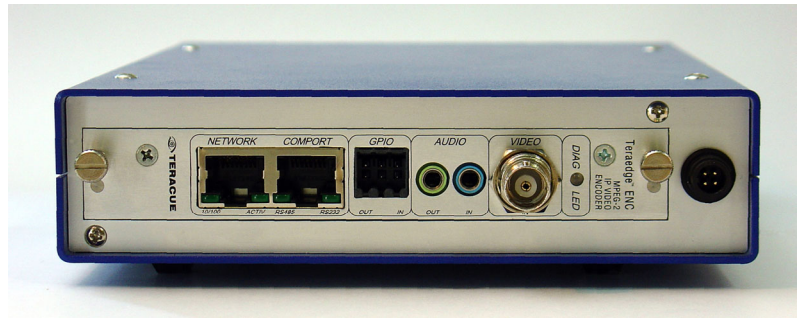


The ENC series is designed for LIVE streaming applications where single TV channels, CAMERA signals or MONITORING feeds are distributed or published on a network.

The ENC series provides real-time compression of video and audio inputs. The ENC models create and transmit video streams inside LAN and intranet networks.

Input video/audio signals on an ENC encoder and view these streams directly -via network- on PC's, TV's or other display devices.

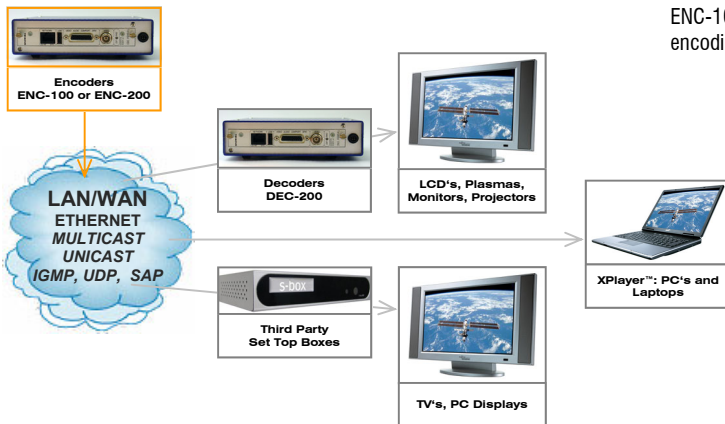
The ENC-100 is a compact, low cost MPEG-2 SD video encoding and LIVE streaming blade.



All ENC-100 models process input streams in full DVD-quality for professional MPEG-2 SD streaming to any kind of device. ENC-100 encoder blades are built for robust 24/7 LIVE encoding operations and can be used in tough environmental conditions. They are designed without any moving parts, making them disk-, fan- and noiseless.

ENC-100 combines high-performance with unparalleled simplicity in a compact Ethernet video encoding appliance designed for commercial, institutional, and industrial applications such as:

- **Broadcast/TV Distribution over IP**
- **IPTV/Confidence Monitoring**
- **Security/Surveillance/Monitoring/Public Safety**
- **Medical/Corporate/Military/Industrial-Training**
- **Education/Distance Learning/Tele-Teaching**
- **Finance/Brokerage Television**
- **Legal/Legislative Communications**
- **News/Sports/Advertising Agencies – Air/Rail station advertising**
- **Manufacturing/Process Monitoring**
- **Hospitals/Clinics/Telemedicine**



Networking video input and stream creation

The ENC-100 real-time encoder is designed for LIVE streaming applications such as LIVE TV or video transmission, video trunking, IPTV encoding, remote monitoring feeds, video collaboration and is also used as the ingest for LIVE and VOD video publishing systems.

Flexible video for LIVE and ON-DEMAND

Real-time LIVE streams from ENC-100 encoders can be viewed on PC's by using Teracue's XPlayer software player. TV's, LCD's, plasmas, monitors, can join the transmission streams with the robust DEC decoder series. Consumer and PC-based displays can cost-effectively receive ENC-100 streams with the new s-box set top box series.

To record and preserve LIVE feeds for later viewing, analysis or simply archiving the ICUE VOD streaming server has been designed.

Professional quality

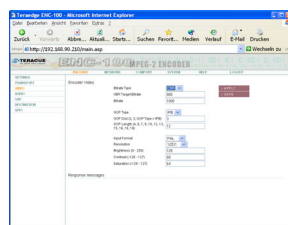
ENC-100 encoders incorporate low-latency compression technology and professional signal processing, creating full resolution and smooth motion DVD-quality video streams.

Simple setup

Connect LAN Ethernet and a video/audio input signal and the ENC-100 encoder will turn into a true video networking "port", transmitting your video in digital form over IP networks.

Easy configuration

To access the intuitive graphical user interface use your standard web browser from any PC on the network, no special or additional tools required.



TALKBACK audio conferencing, integrated COM server and GPIO

The ENC-100 supports TALKBACK. This allows audio conferencing and communication between encoder standpoint and viewer. TALKBACK to ENC encoders is supported by PC's, as well as from the DEC decoder series. COM server supports remote control of PTZ cameras and other peripheral serial equipment through it's integrated RS-232/485 port. The GPIO interface enables basic remote control of the ENC-100, e.g. turning encoding/transmission on/off, by a light sensor or foot switch.

Extremely robust and durable

The ENC-100 runs on an embedded real-time platform. This blade is designed without any moving parts, as hard drives/fans, to ensure system uptime, reliability and noiseless operation. The ENC-100 can be used in extreme operating conditions and at temperatures up to 65°C.

Blade based operation

The ENC-100 blades are operated inside the FR chassis series. Blades can be used in a single channel chassis (FR-110, as shown above) or in the FR-210 dual channel chassis. High-density requirements are solved by operating the ENC blades in the FR-2000 multi-channel rack, which can hold up to max. 21 Teracue blades. Different types of ENC encoder blades, DEC decoder blades and DVB/IP videogateways can be "mixed and matched" inside the FR-2000 chassis.

Models of the ENC-100 series differ in video input options:

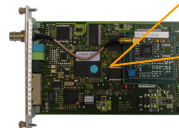
ENC-100-COMP
Composite Input



ENC-100-YC
S-Video Input



ENC-100-SDI
SDI Input



ENC-100 Technical Data

The ENC-100 is used as a streaming input, for stream creation and for LIVE transmission or VOD/NVOD recording applications. The ENC-100 series real-time MPEG-2 SD encoder is designed as a video and audio input for professional LAN and intranet video networking solutions. The ENC-100 is based on a standard Europe Card design and can be operated in either single or dual channel chassis' and in multi-channel rack frame configurations.

ENC-100 MODELS

| | |
|--------------|---|
| ENC-100-COMP | MPEG-2 SD encoder blade with COMPOSITE input |
| ENC-100-YC | MPEG-2 SD encoder blade with Y/C, S-Video input |
| ENC-100-SDI | MPEG-2 SD encoder blade with SDI Video input |

ENCODING SPECIFICATIONS

| | |
|---------------------|---|
| Standards | PAL, NTSC |
| Video Inputs | Dependent on ENC-100 model Composite Input: 1 V _{pp} , 75 Ohm (BNC), S-Video Input: 1 V _{pp} (Y), 0,3 V _{pp} (C - Pal), 0,286 V _{pp} (C - NTSC), 75 Ohm (miniDIN), SDI Input: 0,8 V _{pp} , 75 Ohm (BNC), embedded audio supported for orders of min. 50 units |

| | |
|--------------------------|---|
| Video Resolutions | Full D1: 720h x 480/576v, 2/3-D1: 704h x 576/480v Half-D1: 384h x 480/576v, CIF/SIF: 384h x 240/288v |
|--------------------------|---|

| | |
|---------------------------------|--|
| Audio Inputs | Unbalanced Analog Stereo, Line level, 3.5mm jack (mini jack) |
| Audio Outputs (TALKBACK) | Analog Dual Mono, Line level 3.5mm jack (mini jack) |

| | |
|------------------------------|---|
| MPEG-2 Video Encoding | MPEG-2 (ISO/IEC 13818-2), Main Profile at Main Level (MP@ML), 4:2:0 |
|------------------------------|---|

| | |
|---------------------|--|
| Stream Types | ISO/IEC 13818-1 Transport ISO/IEC 13818-2,3 Elementary A/V |
|---------------------|--|

| | |
|--------------------------------|---|
| Video Encoding Bitrates | 800Kb/s – 15Mb/s (CIF/SIF min. 800Kbit/s, Full D1 min. 2Mbit/s) |
|--------------------------------|---|

| | |
|------------------------------|--|
| MPEG-2 Audio Encoding | MPEG-1 Audio Layer 2 (ISO/IEC 11172-3 Layer 2) |
|------------------------------|--|

I/O SPECIFICATIONS

| | |
|--------------------------|--|
| Network | 10/100TX Ethernet, RJ45, half/full duplex, Auto-sensing |
| Streaming Traffic | Unicast and Multicast traffic supported |
| IP Protocols | HTTP (Web Browser), TCP/IP Control Protocol, UDP/IP Streaming, IGMPv2, Supports SAPv1, SNMP, DHCP |

| | |
|------------------------|--|
| RS-232/485 port | Remote control for non IP devices via TCP/IP RS-232/485 command tunnelling |
|------------------------|--|

| | |
|------------|---|
| GPI | 1 INPUT, for device control: streaming on/off configuration |
|------------|---|

ENVIRONMENTAL

| | |
|---------------------------------|---|
| Agency Approvals | CE, RoHS |
| Humidity | Up to 80%, non-condensing |
| Temperature | 0 to +65°C environment temperature; fanless when operated in FR-110 or FR-210 chassis |
| Weight | Approx. 150 grams |
| Blade dimensions (H/W/D) | 20mm x 130mm x 190mm |
| Power | 5W per blade |

| | |
|-------------------------|--|
| Limited Warranty | 1 year standard limited warranty. Warranty extensions available. |
|-------------------------|--|

***PLEASE NOTE: Live streaming/Multicast Streaming requires specially designed and configured networks.
Minimum Requirements include: Layer-3 Switched Ethernet, Multicast Enabled, IGMPv2/3, Network and Multicast Routing Supported.

