

New from Matrox



Matrox® PowerWall™ Software and API

Video wall designs and installations made easy

Matrox® PowerWall™ is an advanced yet easy-to-use management software included with Matrox QuadHead2Go™ multi-monitor controllers. Designed to simplify video wall designs and installations, Matrox PowerWall software allows the QuadHead2Go devices to be set up in three quick steps—discover, configure, and deploy.

Integrators can install and use the intuitive software in offline mode to customize configurations of any type and size, and control the outputs independently—even before establishing an active connection to a QuadHead2Go—making video wall deployment easy.

For OEMs and system integrators seeking to customize applications ranging from single-function operation to thorough integration, the complimentary Matrox QuadHead2Go REST API is available upon request.

Matrox PowerWall makes deployments simple and efficient



Discover

- **Locate units effortlessly** over the network using a DHCP or Static IP address.
- **Discover multiple QuadHead2Go units** and set their respective configurations from a central location.



Configure

- **Create and save pre-set configurations** in advance by working offline without needing an active connection to a video wall controller or any other source.
- **Customize configurations** to replace the original pre-sets, enabling faster setups—edit, save, or delete configurations at will.
- **Manage display modes** with great flexibility by taking in an input video of any resolution up to 8K x 8K and displaying each output in any resolution up to Full HD 1920x1200 @ 60 Hz.
- **Rotate each output independently** of the others in 90-degree increments—90, 180, and 270 degrees—for countless possible artistic video wall configurations.
- **Control and fine-tune bezels** using the pre-set images to ensure seamless image displays.
- **Optimize visuals** by cropping, upscaling, or downscaling the content as desired.



Deploy

- **Easily upload customized configurations** from the software to the units with the click of a button.
- **Free up resources** for other services by removing the software soon after deployment without affecting the video wall.

matrox.com/graphics

matrox®
Graphics for Professionals

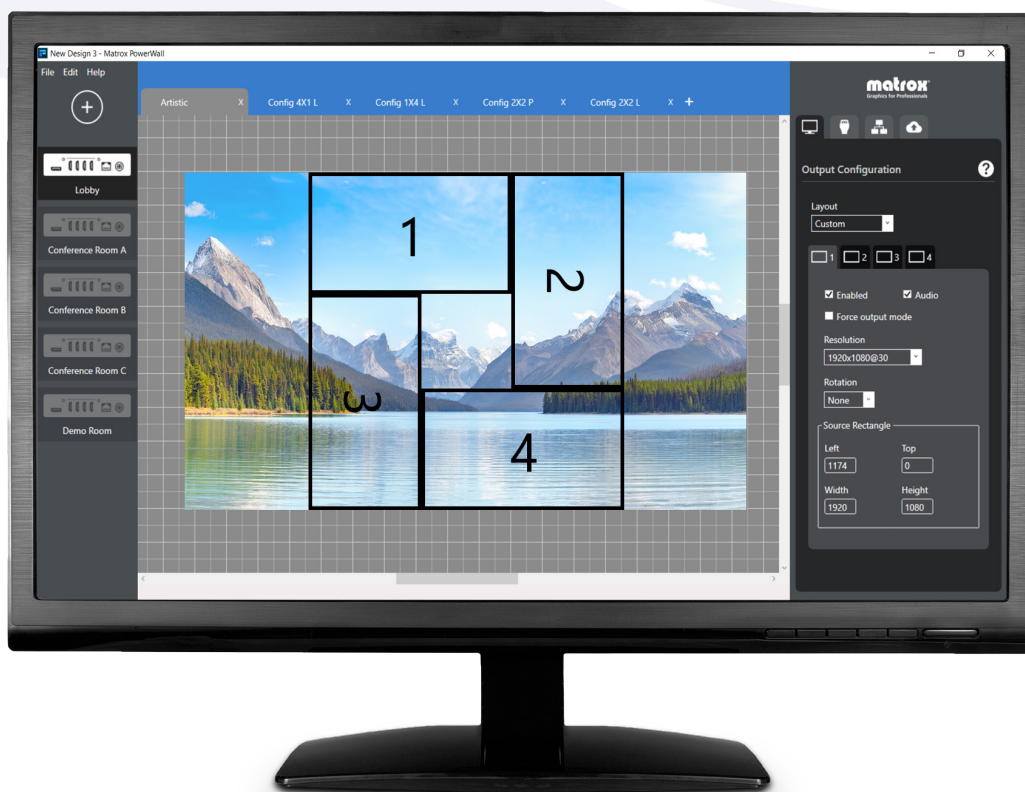


Matrox QuadHead2Go REST API

OEMs and developers have the ability to build customized applications, and/or integrate QuadHead2Go functionality into their existing applications using the Matrox QuadHead2Go REST API.

System requirements

Matrox® PowerWall™ software	
Supported operating systems	Microsoft® Windows 10® Standard (64-bit) Microsoft Windows 10 Professional (64-bit) Microsoft Windows 10 Enterprise (64-bit) Microsoft Windows 10 IoT Microsoft Windows Server 2016



Contact Matrox

graphics@matrox.com | North America Corporate Headquarters: 1 800-361-1408 or 514-822-6000

London Office: +44 (1895) 827300 or +44 (0) 1895 827260

Serving: United Kingdom, Ireland, Benelux, France, Spain, Portugal, Middle East, Africa

Munich Office: +49 89 62170-444

Serving: Germany, Austria, Switzerland, Denmark, Finland, Norway, Sweden, Central and Eastern Europe, the Baltic States, Greece, Turkey, Italy

© 2019 Matrox Graphics, Inc. All rights reserved. Matrox reserves the right to change specifications without notice. Some features may not be available at launch. Contact Matrox for more details on specific requirements. Matrox and Matrox product names are registered trademarks in Canada or other countries and/or trademarks of Matrox Electronic Systems, Ltd and/or Matrox Graphics Inc. All other company and product names are registered trademarks and/or trademarks of their respective owners. 06/2019

matrox
Graphics for Professionals