

# COSM0500

---

## DESCRIPTION

Thanks for purchasing Cosmo500, the wireless HD video transmission device. This product adopts our latest wireless technology, widely used in film shooting, sports events, education market and other fields, with 500ft of uncompressed, no delay wireless video transmission capabilities.

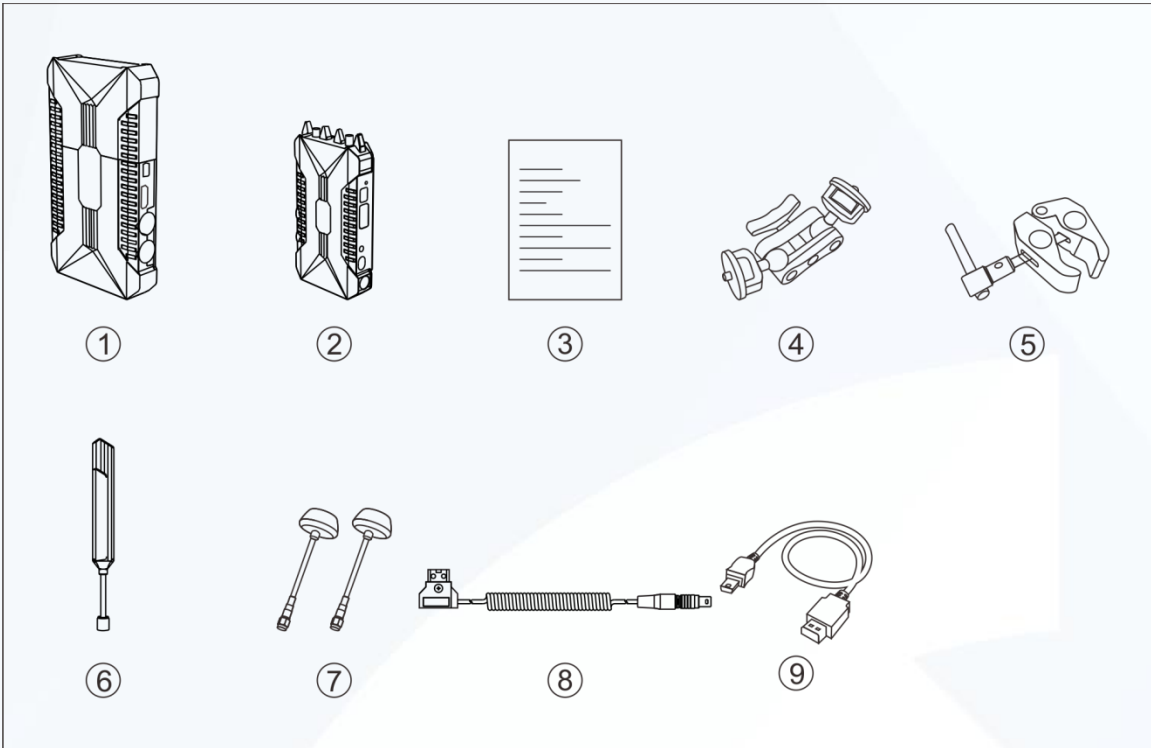
## KEY FEATURES

- Uncompressed, non-delay wireless HD video transmission at the radio and television level
- 200 meters transmission distance
- Frequency Band: 5.1~5.9GHz, Support different regional frequency configurations
- SDI/HDMI input and SDI Loop out, Dual SDI output, HDMI output
- Support one transmitter to transmit video, multiple receivers receive simultaneously
- Both the transmitter and the receiver can mount the battery
- 7~36V DC Wide voltage input
- Support USB interface software upgrade
- Stable and reliable industrial metal casing

## APPLICATION

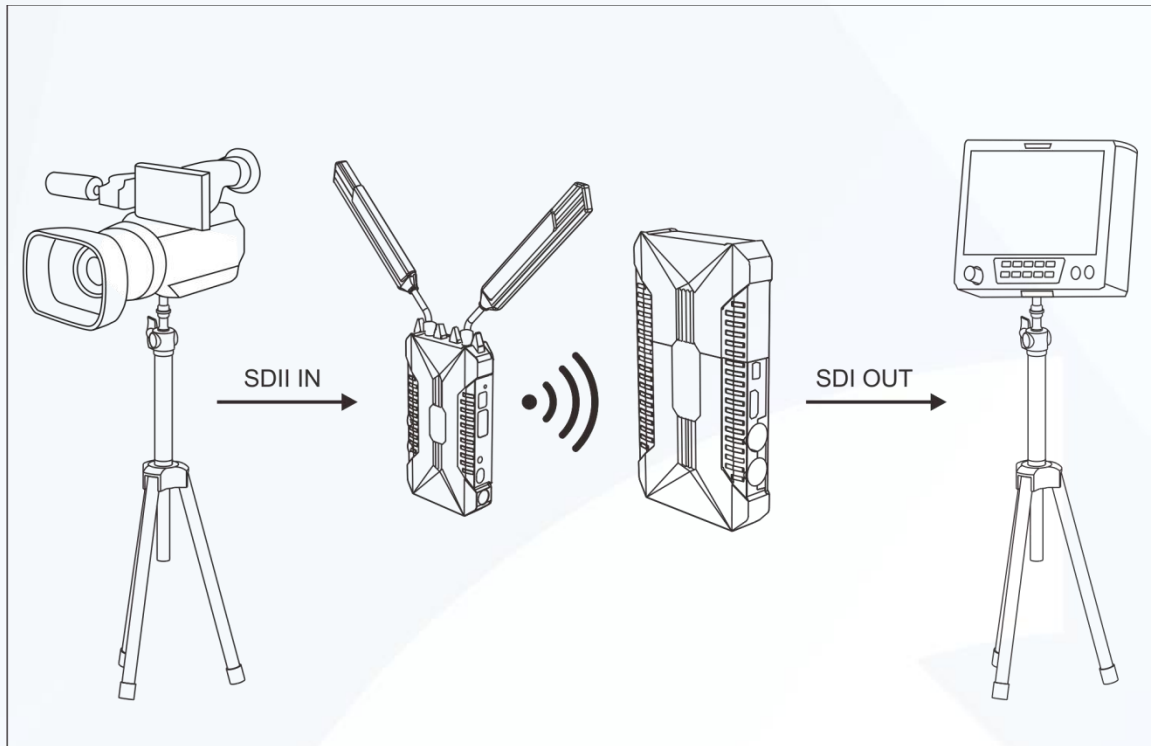
- Film shooting
- Sports event
- Wedding celebration
- Business activities

## PACKING LIST

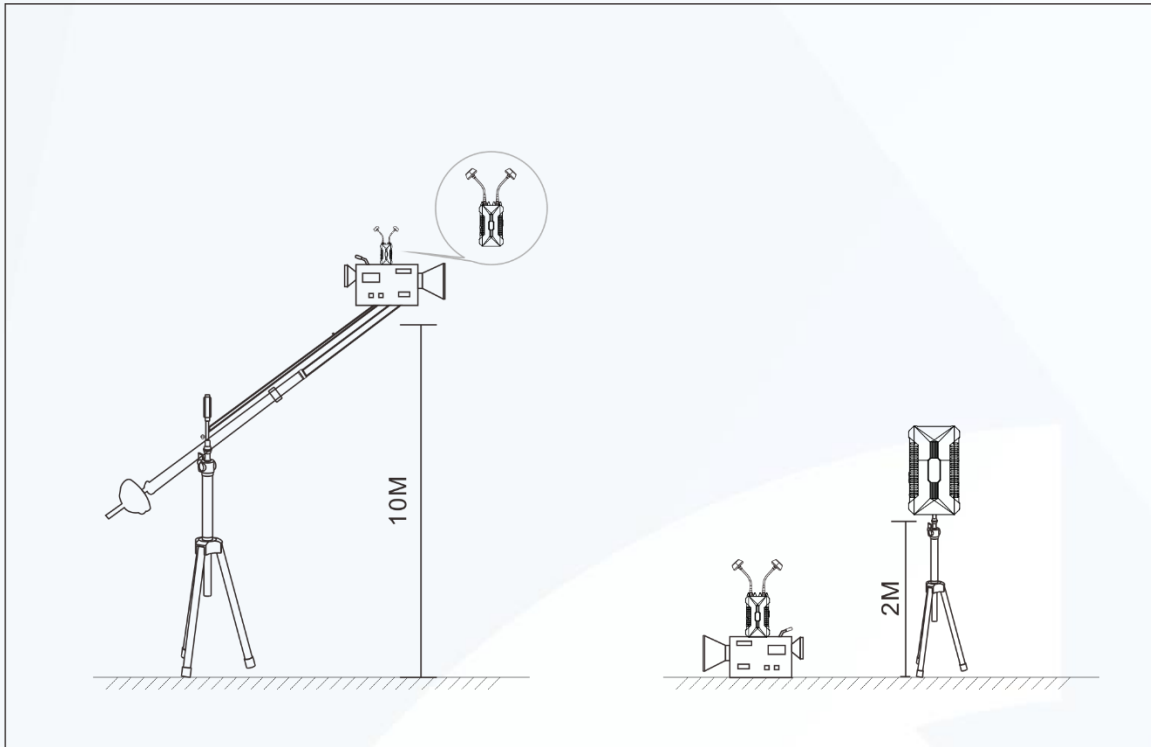


1. Receiver	x1
2. Transmitter	x1
3. User manual	x1
4. 7-inch magic arm	x1
5. Crab Clamp	x1
6. 5GHz Antenna	x3
7. Mushroom Antenna	x2
8. DC/Lemo Conversion Cable	x2
9. USB cable	x1

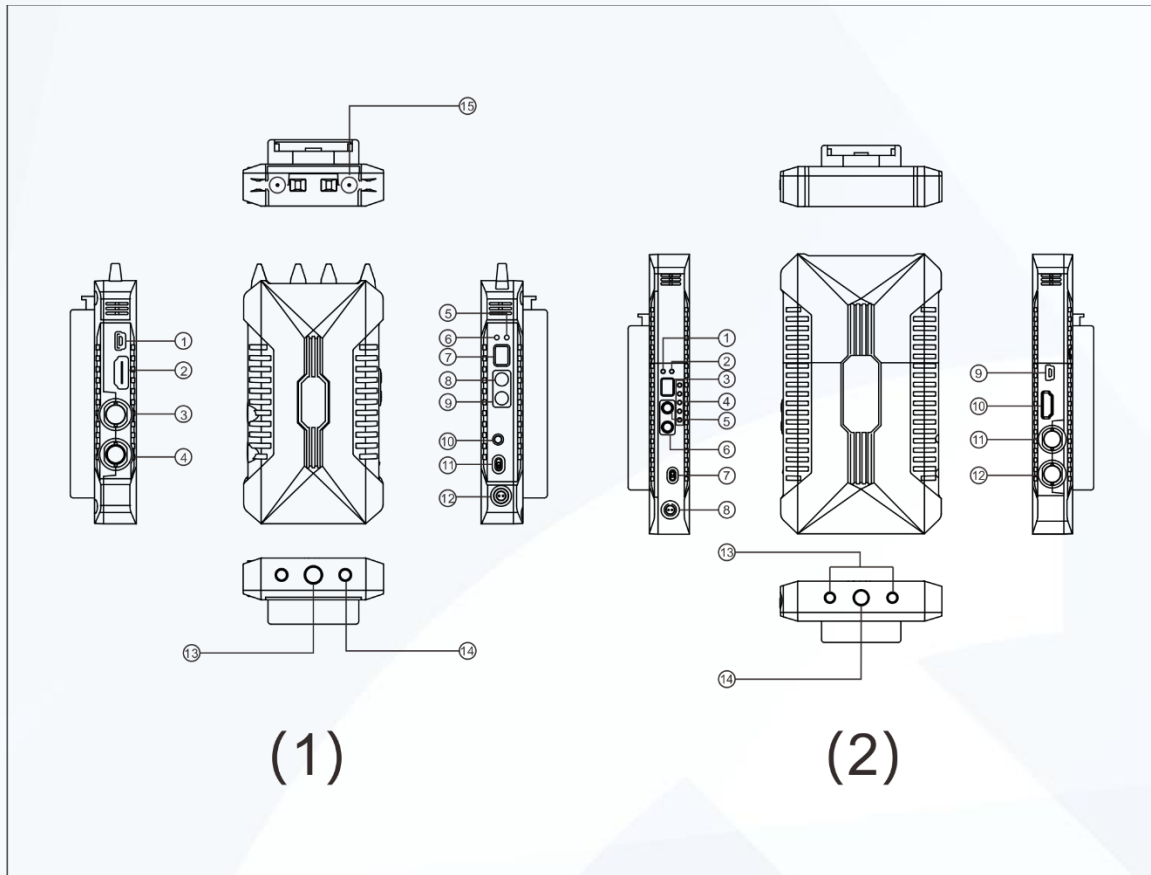
## STANDARD SETUP



The wireless high-definition video transmission device adopts the latest wireless communication technology, and can realize uncompressed and delay-free high-definition wireless video transmission at the radio and television level. The transmitter supports SDI, HDMI input, and SDI loop out. The receiver supports dual SDI output and HDMI output. The transmitter adopts broadcast mode. In broadcast mode, the transmission distance is 200 meters, which needs to work at fixed frequency.



This product has mushroom antenna accessories. When the height difference between the transmitter and the receiver is large, it is recommended to use a mushroom antenna to improve the stability of wireless transmission.

**PRODUCT INTERFACES**

**(1) TRANSMITTER**

1. Mini USB interface
2. HDMI input interface
3. 3G-SDI Loop out interface
4. 3G-SDI input interface
5. Video indicator
6. Link indicator
7. Digital tube
8. CH Button
9. Enter Button
10. 3.5mm Analog audio input interface
11. DC Power Switch
12. DC Power interface
13. 3/8-16 Screw hole
14. 1/4-20 Screw hole
15. RP-SMA Antenna male interface

**(2) RECEIVER**

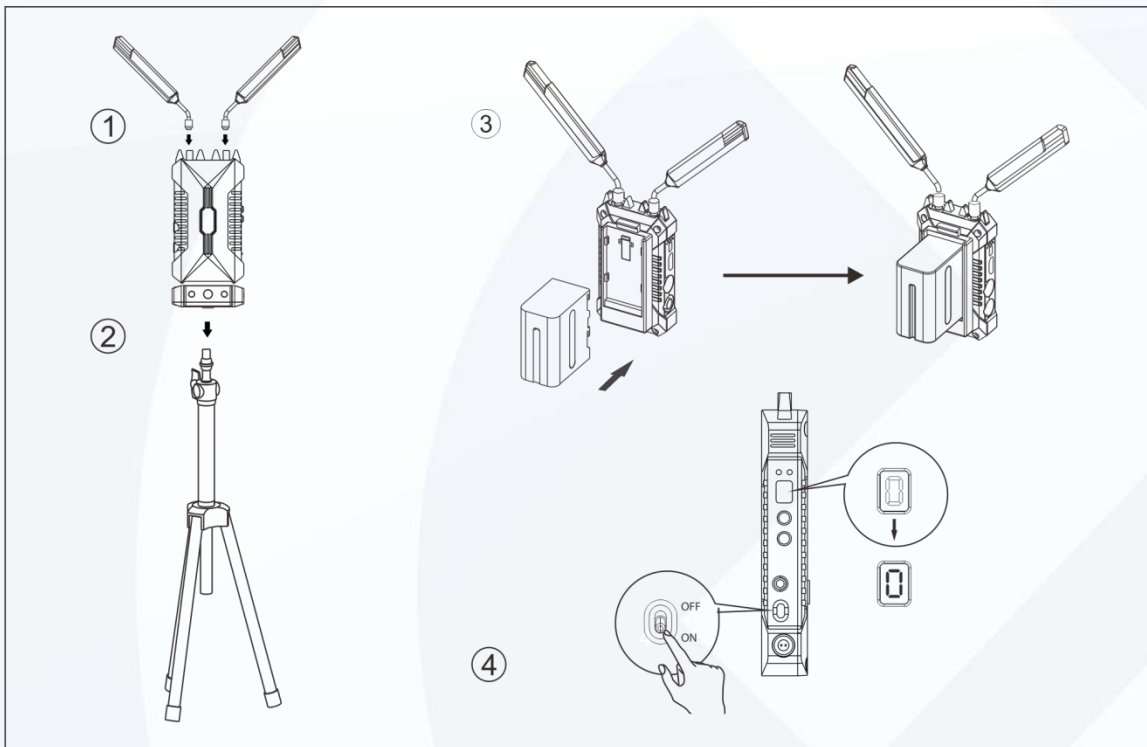
1. Link indicator
2. Video indicator
3. Digital cube

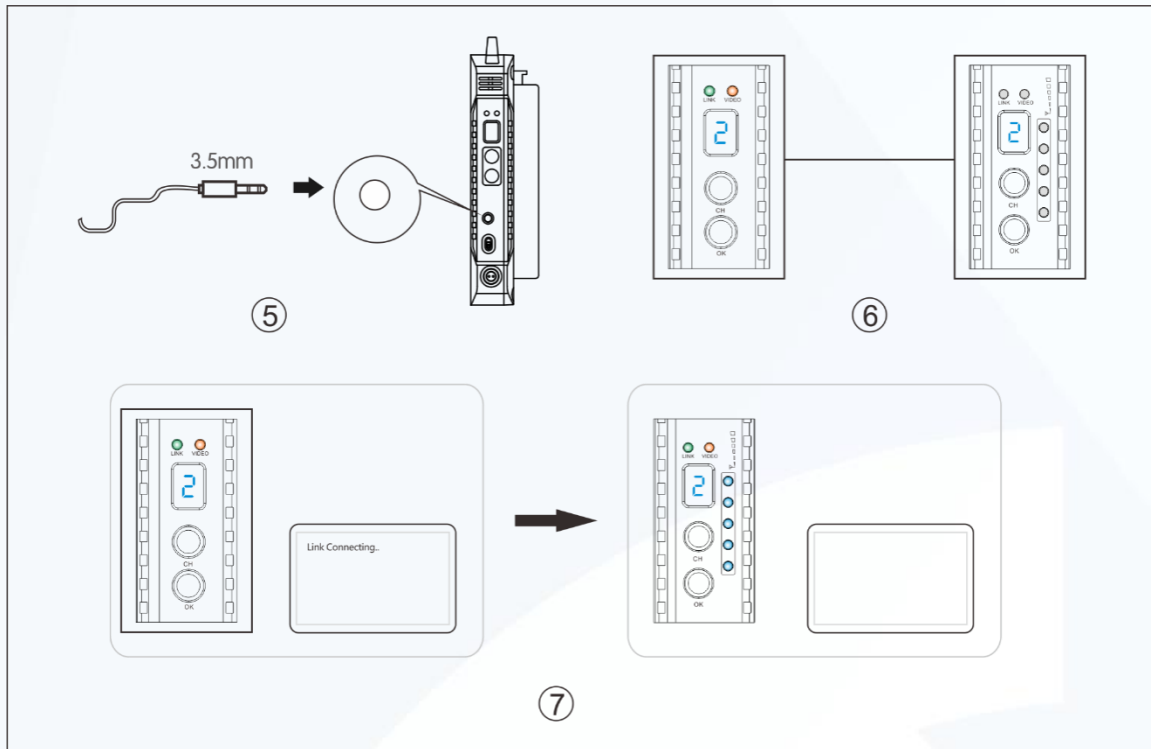
4. Signal strength indicator
5. CH Button
6. Enter Button
7. DC power switch
8. DC power input interface
9. Mini USB interface
10. HDMI output interface
11. 3G-SDI output interface 1
12. 3G-SDI output interface 2
13. 1/4-20 Screw holes
14. 3/8-16 Screw holes

## INSTALLATION

### Product detailed installation steps and precautions

1. Install the antenna as shown below;
2. Fix transmitter and receiver;
3. Mount battery;
4. Power on, open to "ON" state;
5. Audio signal input at Transmitter
6. Setting the same channel between Transmitter and Receiver;
7. Connecting;





## PARAMETERS

	Transmitter	Receiver
Interface	SDI Input (BNC female); SDI Loop Out (BNC female); HDMI Input (Type A female); 2 Antenna Interfaces (RP-SMA male); DC Power Input, Mini USB; 3.5mm Analog audio input	SDI 1 Output (BNC female) ; SDI 2 Output (BNC female); HDMI Output (Type A female); DC Power Input, Mini USB;
Supply Voltage Range	7~36V DC	7~36V DC
Power Consumption	<6W	<8W
Net weight	210g	250g
Dimension	(LxWxH) :130.5x70.5x21mm Not including external antennas and battery plate	(LxWxH) :161x93x23mm Not including battery plate
Input Video Format	HDMI: 480p60, 576p50, 720p50/59.94/60, 1080i50/59.94/60, 1080p23.98/24/25/29	/

	. 9/30/50/59. 94/60; SDI:3G, HD, and SD-SDI (auto-selected), SMPTE-259/274/292/296/372/424/425;	
Output Video Format	/	HDMI: 480p60, 576p50, 720p50/59. 94/60, 1080i50/59. 94/60, 1080p23. 98/24/25/29. 9/30/50/59. 94/60; SDI: 3G, HD, and SD-SDI (auto-selected), SMPTE-259/274/292/296/372/424/425;
Input Audio Format	SDI/HDMI embedded 2 channel 24 bit/48KHZ	/
Output Audio Format	/	SDI/HDMI embedded 2 channel 24 bit/48KHZ
Frequency Band	5. 1-5. 9GHz, Configurable with China, North America and Europe	5. 1-5. 9GHz, Configurable with China, North America and Europe
Modulation Mode	OFDM-16QAM	OFDM-16QAM
Transmission Power	Maximum 17dBm	/
Receiver Sensitivity	/	-75dBm
Bandwidth	40MHz	40MHz

## FAQ

### 1.No video output on display

- 1).Please check TX and RX power first. If power is supplied by battery or external power source, please make sure the battery or external power source works normally ;
- 2).Please check that the antenna connected to the transmitter and receiver is securely mounted.
- 3).Then check if the transmitter shows the source and format; if not, check if the SDI cable or HDMI cable connected to the transmitter is reliably connected to the camera or if the camera has video output.
- 4).Please check input video format is compatible with this product specs
- 5).Please check if battery power is too low.

### 2.Poor output video quality

- 1).Check if SDI or HDMI input or output cable is plugged well ;
- 2).Make sure the Transmitter and Receiver are placed at least 1.5 meters above the ground;
- 3).Please check the wireless signal strength indicating "RSSI" status. There should be at least 2-3 RSSI LED lit if the user wants to get better video quality. If there is



only 1 RSSI LED or no LED light, that means the received wireless signal is too weak. Please change to other frequency channels in case some exist interference, or decrease the transmission distance.

---